

# THE TEMPLE CHRONICLE

## THE RABBI SPEAKS RABBI BARRY BLOCK



Dear Friends,

The antisemitic arson attack on Beth Israel Congregation in Jackson, Mississippi hit close to **home**. Yes, that's in part because it's not far away, in our region, and many of us have been at Beth Israel Congregation. And yes, it's in part because many of our

Temple members, children, and teens have friends from Jacobs Camp who are part of that congregation. The most significant reason it hits so close to home, though, is that we can picture it happening here, to our **home**, Congregation B'nai Israel.

The Temple building is our communal **home**. Yes, as a rabbi, I am sympathetic to arguments that what matters about a congregation is its programs and services, not the physical edifice. At the same time, the building enables us to hold the programs and services that give life to our קהילה קדושה (*k'hilah k'doshah*), our holy community. Just as important, we are heirs to a Temple building that elevates our community and our spirituality. The architects and visionaries behind Congregation B'nai Israel's edifice on Rodney Parham Road made a priority of:

- Community building. When we walk in the door, we enter a space for gathering, for embracing one another, for welcoming Shabbat and Holy Days. The living room setting enhances that function. (And yes, that furniture is due an update.)
- Natural beauty. In our neighborhood, other houses of worship did what most would, clearing the land of brush and leaving only a few tall trees. We revel in the natural beauty that the architects made a priority of leaving as untouched as possible and

## WORSHIP AT-A-GLANCE

### FRIDAY NIGHT SERVICES IN FEBRUARY

Oneg Shabbat at 5:45 pm  
Services at 6:15 pm

#### February 6

Shabbat Service led by Samuel Levin and Rabbi Block

Sermon: "Jethro's Righteousness"

Music: Jana Cohen and Josiah Wheeler, accompanied by Kathy Cooper

Oneg Shabbat Host: Friends and Family of Samuel Levin on the occasion of his becoming Bar Mitzvah

#### February 13

Shabbat Service led by Rabbi Block  
Sermon:

"Free Exercise of Religion for Everyone", a sermon for NCJW's Repro Shabbat

Music: Jana Cohen

Oneg Shabbat Host:

Rickie Lockwood Oliva & Robert Oliva in loving memory of "John John" Kerner

#### February 20

All Music, All Debbie Friedman Shabbat Service, led by Temple musicians.

Oneg Shabbat Host: Ellyn Polsky in celebration of February Birthdays.

#### February 27

Service for Shabbat Zachor, the Shabbat of Remembrance before Purim, led by Rabbi Block and E. Lee Ronnel Cantor Lisa Levine

Special Guest Speaker: Alan Morinis, *The Shabbat Effect*

Oneg Shabbat Host:

Cherry & David Goldsholl

*continued on page 2*

bnai-israel.us

continued from page 1

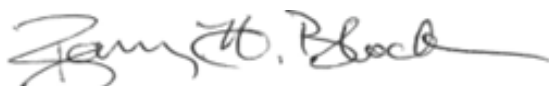
visible through the soaring windows of our Sanctuary and library.

- Spirituality. The extraordinary of the design of our Sanctuary bimah draws the eye and the heart toward the Torah scrolls, toward the light, and toward symbols of Judaism that continue to emerge the longer one gazes at the Ark.

Fifty-plus years after the dedication of our extraordinary synagogue **home**, our Temple has shown its age, for good and ill. For good: The building has stood the test of time! I refer to it as "Seventies done right!" More challenging: A decade ago, when she was our Temple Administrator, Rebekah Lee told me that the building's needs consumed the majority of her time. Michael Roberts would tell us the same. It has also consumed a substantial portion of the Sustaining Fund, which had been brought to a very healthy sum in the "Once in a Generation" capital campaign in the first decade of this century.

In close coordination with our Building and Grounds Chair, Janet Korenblat, Michael works diligently to maintain our Jewish community home. We are in the midst of a tremendous overhaul of our heating and air conditioning system, a project led by Eugene Krupitsky. After a costly lapse of some years, we have resumed monthly inspections of our roof, with the hope of making repairs and initiating replacement of roof sections before we sustain damage inside.

Janet and Michael, in partnership with additional volunteers, vendors, and contracted staff, are constantly working through issues large and small in our building, assuring that we may all remain proud of our synagogue **home**. If you see anything in our building that needs attention, no matter how small, please let Michael know!




### Al Barron Book Club

Sunday, February 8, 3:00pm, the lobby

*Queen Esther*  
John Irving

Irving revisits the world of his bestselling novel *The Cider House Rules* and follows the life of a girl of Viennese Jewish descent who was orphaned and who faces antisemitism in Maine in the 1900s.

## Saturday Mornings in February

Bar Mitzvah of Samuel Levin, Saturday, February 7, at **10:30am**, led by Samuel, Rabbi Block, Jana Cohen, and Josiah Wheeler, accompanied by Kathy Cooper in the Sanctuary.

Shabbat Torah Study at 9:30am, led by Rabbi Block on February 7, 14, and 21, and by special guest Alan Morinis on February 28. Please note that Torah Study will be abbreviated on February 7, ending at 10:15am.

Shabbat Morning Worship at 11am in the Library, led by Rabbi Block on February 14 and 21, and by Rabbi Block and Cantor Levine on February 27.

### January Gratitude

#### Oneg Shabbat Hosts & Sponsors

Brooke & Cory Daniels

Doris Krain

Steve, Trip, & Susan Strauss

#### Security & Flowers Sponsors

The Alman Family

Steve, Trip, & Susan Strauss

#### Security Sponsors

Liz Lucker & Mary Machen

#### Office, Building, and Grounds Support

Eoin Dockter

Jim Pfeifer

#### Service Streaming & Sound Volunteers

Lane Boyd

Bruce Greenberg

Timothy Kessler

Abbey Shoemaker

Annabelle Imber Tuck

Shawn Williams

Also thanks to Janet and Scott Korenblat, who organized the Vogel Caring and Sharing Fund Luncheon for Shabbat Chanukah and the Food Drive for Potluck Food Rescue

## FROM PRESIDENT LEWIS KRAIN

What does it mean to pray well, or pray successfully? Praying means different things to different people, even to the same person throughout their life. When I was a kid studying for my Bar Mitzvah, prayer was a question of accuracy. What percent of these Hebrew words did I speak correctly and in the right tune? I could judge the success of each Saturday by a simple ratio of words sung correctly divided by total words sung.

As I got older that seemed kind of an overly concrete approach, and I became much more interested in what I was saying than the precision with which I was saying it. I worked to decipher the Hebrew, paying more attention to the translation than the transliteration, and studied the historical context of each prayer. This was more satisfying and engaging, but was very focused on myself and really ignored the rest of the congregation. In those days Temple services felt very solitary to me, because even if I was talking with friends before and after, the focus during the service was all internal to myself.

As an adult I usually arrive to Friday services tired and overstimulated from the work week. I spend the first part of the service trying to get centered; letting the voice of the congregation surround me as I try to put aside the noise and clutter of the week. At some point, I find myself with the focus and energy to join in myself and add my voice to the mix. Nowadays the community of prayer is what matters to me, and what inspires me is the cohesiveness of the group. It's much like a mindfulness activity that I would use in my mental health work (I don't have space to cover mindfulness here but ask me in person sometime... it's amazing). This approach is both the most rewarding and most engaging I have ever taken at a Temple or Synagogue, and really has redefined my relationship with Judaism.

There are as many different approaches to prayer as there are members of our congregation (and more, since like me most people have had evolving approaches in their life), and I'm sure the rabbis have much more wisdom to share on the topic than I do. Nevertheless, I think it's interesting and valuable to take a moment to take stock of what the act of praying means to you, and how you feel like you get the most out of your time in the Temple.

---

**Adult Learning at Congregation B'nai Israel presents:**

## **#Judaism 201: “Doing Jewish at Services and in Life”**

An ongoing discussion of how to participate in Jewish services and holidays, taught by lay leaders of the community.

### **Session 2 – Sunday, February 15, 9:15-10:30 – *Living the Sh'ma – Mezzuzah, T'fillin, and Tzitzit***

Taught by Michael Roberts

A deep dive into the *Sh'ma*, Judaism's cornerstone prayer and declaration. With an emphasis on the physical symbols that have traditionally arisen from this prayer: *Mezzuzah*, *T'fillin*, and *Tzitzit*. Come learn about how to take this prayer from words into action, including the opportunity to wrap *t'fillin* here at the Temple.

### **Session 3 – Sunday, March 15, 9:15-10:30 – *Seder Kriat HaTorah – The Torah Service***

Taught by Carmen Arick and Emily Adams

An in-depth look at the Torah service, including prayers for removing the Torah from the Ark, blessing before and after Torah reading, the Haftarah, *hakafot* (marching with the Torah), and *hagbah* (lifting the scroll after reading). Not only an overview of just what goes on during this part of the service, but how tradition creates boundaries we use for devotion.

Attend in person or use this QR to join by Zoom.



## Religious School News

While we consider our Religious School at Congregation B'nai Israel to be a community in and of itself, part of our curriculum is a focus on how we live and operate in both the wider Jewish community and as citizens of a diverse and multicultural world. To that end, we often talk about concepts like *tzedakah* (which normally translates to “charity,” but really derives from the word “justice”) and *g'milut chasidim* (acts of loving kindness). Our students are encouraged to bring small donations every week to go toward charity, our *b'nai mitzvah* students design community service projects as part of their preparation to enter the Jewish community as adults, and we promote the idea of helping others as a foundational aspect of what it means to be Jewish.

As part of this educational goal, our students in grades 4-5 and 6-7-8 recently toured the Arkansas Food Bank and helped out in the warehouse during a recent session of religious school. Students, parents, and teachers all came together to learn about this vital organization, food insecurity in Arkansas – and most importantly, they put some work in to help get food from donors into the hands of Arkansas families who need it the most.

While the older kids were on their field trip, our K-1 and 2-3 classes (who unfortunately didn't meet the age requirements to be on the Food Bank warehouse floor) discussed ways they could help others, and learned about the importance of offering a helping hand to people who may need things like food, toiletries, or a warm place to sleep during the cold winter months.

We know that there are times when everyone needs help of some sort. By creating a culture where we're always on the lookout for those in need, we also make it easier for people who need help to ask for it. To me, that is just as important, because we never want anyone to sit in silence and need when we have so many willing hands reaching out to help.

Thanks to Lucee Lugo at the Arkansas Food Bank for making this day possible for us, and to Food Bank Board Member Larry Miller, who has always been there to answer our questions and promote this wonderful organization.

*With gratitude,*

Michael Roberts, Temple Administrator

## Please Join Us in Celebrating

### the Bar Mitzvah of Samuel Isaac Levin

Shabbat Morning,  
February 7, at 10:30am

Followed by a  
Kiddush Luncheon.

All are welcome.

Hosted by

**Krysten & Mark Levin**



A word from Sam:

“For my Bar Mitzvah project, I chose to support Friends of the Animal Village because I love animals—especially dogs—and want to help them feel safe while they wait for their forever homes. Friends of the Animal Village is a volunteer-run nonprofit that supports the Little Rock Animal Village by raising funds, spreading awareness, and providing supplies for animals in need. I am collecting new or gently used items such as blankets, towels, pet food, treats, pill pockets, and toys. You can support my project by scanning the QR code to view Animal Village's wish list and donate directly through the link, or by dropping donated items in the collection box in the Temple lobby. Thank you for helping me make a difference for animals in our community.”

– Samuel Levin

Support Samuel Levin's  
Bar Mitzvah Project:





## Alan Morinis Returns to Congregation B'nai Israel

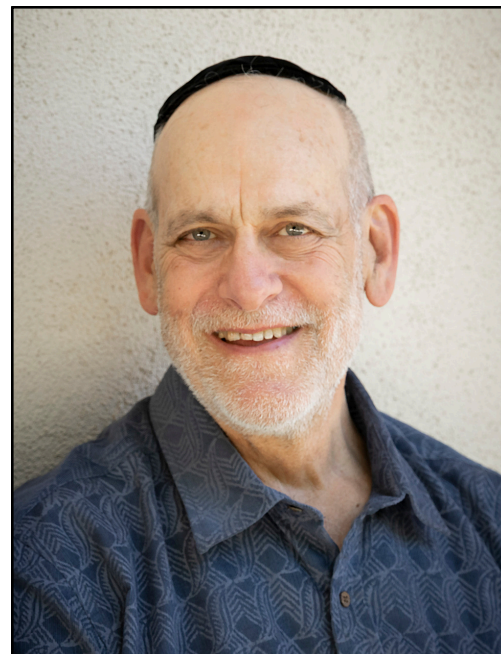
Alan Morinis, founder of The Mussar Institute and author most recently of *The Shabbat Effect*, will return to Congregation B'nai Israel on February 27-28. He is slated to speak on *The Shabbat Effect* at Shabbat services on Friday, February 27, to teach Torah Study on Saturday morning, February 28, at 9:30am in the library, and to speak at a kiddush luncheon following Shabbat services on February 28. His topic at the kiddush luncheon will be, "Cell Phones and Other Obstacles to Holiness."

Our weekend with Dr. Morinis will begin with a meet-the-author gathering at 5:15pm on Friday, February 27. *The Shabbat Effect* will be available for purchase and Morinis will be happy to inscribe books until the Oneg Shabbat begins at 5:45pm. On Saturday evening, February 28, at 7:30pm, he will speak at a Havdalah reception at Congregation Agudath Achim, where *The Shabbat Effect* will again be available for sale, and Dr. Morinis will be delighted to sign your book.

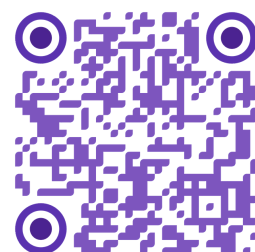
Alan Morinis received his doctorate from Oxford University, where he went on a Rhodes Scholarship. He is one of the leading lights in the revival of the Jewish spiritual tradition of Mussar and is the author of *Climbing Jacob's Ladder* (2002), *Everyday Holiness* (2007) and *With Heart in Mind* (2014). He is the founder of The Mussar Institute and a student of Rabbi Yechiel Yitzchok Perr, zt"l.

About *The Shabbat Effect*: One of the most important biblical mandates, so significant that it numbers among the Ten Commandments, is the directive to observe a weekly day of rest. *The Shabbat Effect* illuminates how the practice of a day set aside for rest brings about a deep, lasting, and pervasive transformation of character, not just on the seventh day but every day.

Alan Morinis's visit to Little Rock, our congregation, and Congregation Agudath Achim is made possible by a generous grant from Annabelle Imber Tuck. Rabbi Block will host the kiddush luncheon in Annabelle's honor.



**THE MUSSAR INSTITUTE**  
Becoming Your Best Self



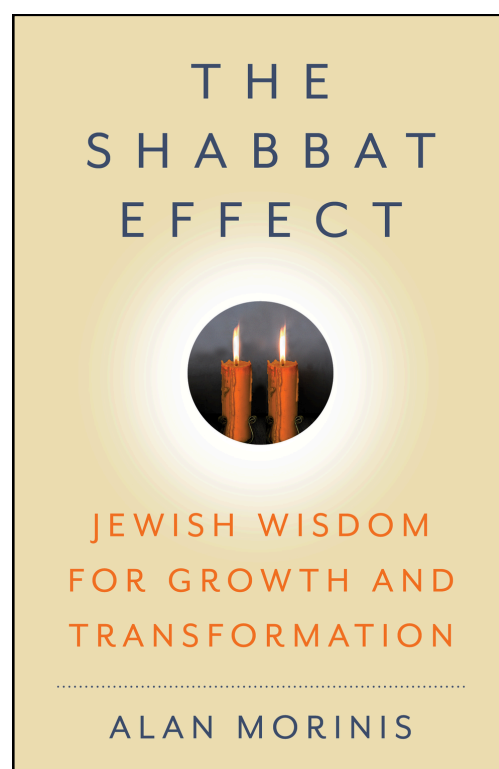
### Kiddush Luncheon Honoring Annabelle Imber Tuck

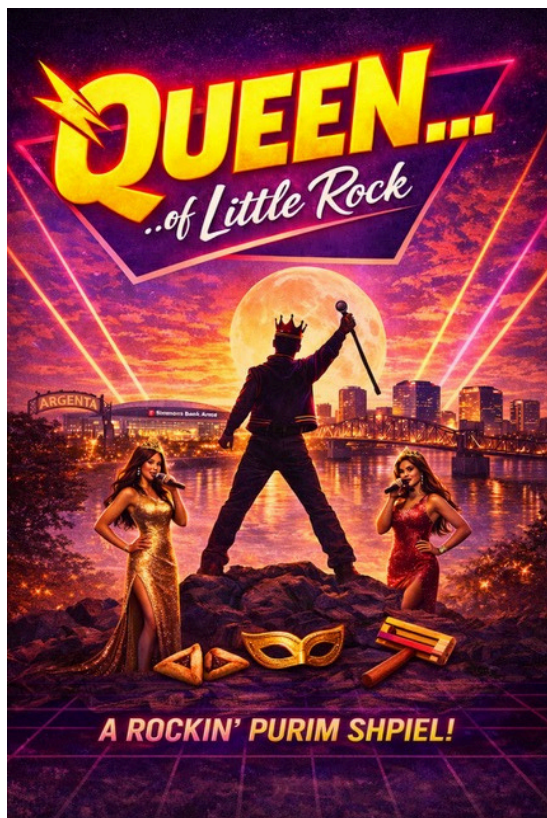
With Special Guest Speaker Alan Morinis  
"Cell Phones and Other Obstacles to Holiness"



Saturday, February 28,  
following Shabbat morning services  
Hosted by Rabbi Barry Block

No charge, but reservations requested no later than  
close of business on Wednesday, February 26, to  
lfrauenthal@bnai-israel.us or 501-225-9700  
or use your cell phone to RSVP with the QR Code.





# Saturday, March 7, 2026

6:00 pm – Clever Cocktails      \$36 – Dinner, Cocktails & Shpiel  
 6:30 pm – Delicious Dinner      \$10 – Dessert, Drink & Shpiel  
 7:15 pm – Queen Shpiel      Kids free (Shpiel only)

Vibe: 70s, 80s, Rocker (music, not chair), Bell Bottoms,  
 Big Hair...or your favorite Purim character!

Rock on with a cast full of kings, queens, and ne'er-do-wells as we celebrate Purim 2026 in epic, glam-rock style. A palace-pleasing themed dinner and tantalizing drinks will fuel the fun as you sing along, make noise, and rejoice—because The Show Must Go On!

The lyrics will be projected  
 on a large screen so you can sing, too!

Please make your reservations by Wednesday, March 4.

Contact Luke in the Temple office:

LFrauenthal@bnai-israel.us

501-225-9700, or use the QR Code Form:



Brought to you by:

Howard Bresnik, Jana Cohen, Meg Marion & Joanne Matson

A LAFTY lock-in will be held in preparation for the carnival after services on Friday, March 6. For more information or to support please contact Findley, annagfindley@gmail.com

## LAFTY News

As Purim approaches LAFTY is preparing an amazing Purim Carnival!! We are so excited for all of the fun activities, and we hope you are too. Please see above for sponsorship information and volunteering opportunities for the Carnival; we appreciate your support.

Purim is one of my favorite holidays, I used to love going to the Purim Carnival, and I'm so glad that I now get to help plan and run it.

Mira, your favorite 2025/2026 LAFTY president

## SAVE THE DATE FOR THE ANNUAL LAFTY

# PURIM CARNIVAL

**Sunday, March 8: 10:30—12:00 pm**

PLEASE CONSIDER BEING A PURIM CARNIVAL SPONSOR

Plan to bake your specialty for the Cake Walk!

Contact Findley, annagfindley@gmail.com to find out how you can help our youth group put on this extraordinary event.

Please pledge your Purim Carnival Sponsorship using this QR code, call the office, 501-225-9700, or email Luke, lfrauenthal@bnai-israel.us



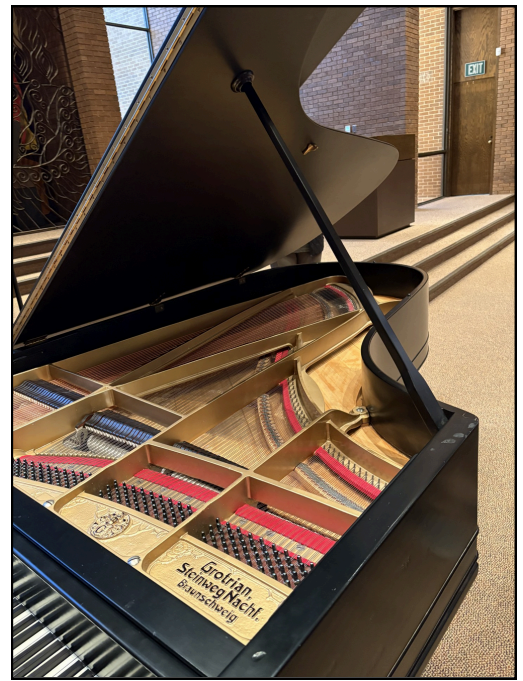
Individual Sponsorship \$36  
 Family Sponsorship \$100  
 Business Sponsorship \$180



Carnival Admission is FREE with a donation to LAFTY!

Includes unlimited games  
 and lunch for all religious school students.





## Historic Piano Now Graces Our Temple Sanctuary

Temple members Karla and Larry Back have made a most meaningful gift to our musical congregation. It was dedicated in Karla's presence during Shabbat services on Friday evening, January 16.

In 1936, when Karla's grandfather escaped Nazi Germany, rescuing five nephews, he was able to bring only one possession: the family piano, a Grotian Steinweg. Steinweg was the name of the family that would become Steinway in America. Grotian Steinweg is recognized worldwide as a premier piano.

The piano graced the Weil and Back family homes in Port Gibson, Mississippi and in Little Rock for generations. Karla learned to play on this piano.

The piano was lovingly restored at the Backs' expense by Stephen Wirges at Steinway Piano Gallery Little Rock. It is a magnificent, resonant addition to Temple life for generations to come!

The baby grand piano that has graced our Sanctuary and elevated our worship for years, donated by Debbie and Brad Diner, has a new home in the Tenenbaum Center, where it will be used to accompany musical performances there. We will no longer be rolling a piano across the Temple, which is not ideal for the instrument.

---

## New Listening Accessibility for our Sanctuary

Thanks to a generous donation from Pat and Barry Solomon, Congregation B'nai Israel will soon have a brand new Bluetooth Assisted Listening system in our sanctuary. We have been working with local company Martin & Co. to design a system which will allow anyone with Bluetooth enabled hearing devices to tune in to the sanctuary sound feed in order to help make our services audible to those who may have trouble hearing.

We want to thank Pat and Barry for their dedication to improving how we worship, and we look forward to activating our system some time in February!

**MARCH BIRTHDAYS**

1st	Gus Blass III Tess Kramer Lee Thalheimer Kathryn Tull Sam Vogel, Jr.
2nd	Sheree Meyer John Oakes Harold Tenenbaum
3rd	Lauren Appell Cidney Hulett
4th	Muriel Lederman
5th	Gay Block Archer Dockter Susan Lowitz
6th	Daniel Berleant
7th	Elizabeth Michael
8th	Leonard Hasson Sydney Lowitz
9th	Stephen Rousseau Brian Storrie
13th	Joyce Franklin
14th	Emily Hooks Vaughn Aaron Lubin
15th	Joan Collins Irwin
16th	Kelli Schlesinger
17th	Judy Grundfest
18th	Kathy Grundfest Franklin Richard
20th	Nancy Rousseau
21st	Lisa Coffey Hulett William H. Friedman Noa Rebecca Margolick
22nd	Brooke Daniels
25th	Jerry Bendorf Jenny Boshears
26th	Joseph Margolick Arnie Mayersohn
28th	Lena Estep Eli Krupitsky Michelle Lemaire
29th	Brad Joseph
30th	John Sokora
31st	Donald Evans Sam Strauss III

**MARCH WEDDING ANNIVERSARIES**

Kirsta & Keith Nigro	3/5	17th anniversary
Elizabeth & Alex Daniel	3/11	15th anniversary
Joanne & Charles Matson	3/20	33rd anniversary
Jill & Jon Flaxman	3/21	27th anniversary
Luci & Daniel Rodell	3/22	46th anniversary
Jana & Perry Cohen	3/25	37th anniversary
Eileen & Larry Hamilton	3/25	31st anniversary
Susan & David Mack	3/28	45th anniversary
Joan & Larry Nafe	3/29	46th anniversary
Rebecca & Alan Kauffman	3/30	42nd anniversary



**Sheri & Micky Simon**, on the birth of their grandson, **Quinn Berman Simon**, born to **Rachel Berman & Eric Simon**

**Annabelle & Henry Tuck** on the birth of Henry's first great-grandchild, **Cohen Charles Mathis**.

**Thaïs Miller & Chad Fusco** on the birth of their son **Felix Carlo Fusco**.



We opened the year with two All Music Shabbat Services in memory of David Bauman and of Dr. Martin Luther King



## FEBRUARY YAHRZEITS

### February 6/7

Gittel Adler  
 Betty Lasker Alexander  
 Dr. Dorothy G Axelroth  
 Lance Bogoslavsky  
 Harry Bresler  
 Albert K. Cohen  
 Edith L Fleisig  
 Louis Goldman  
 Leo Lansky  
 Birdie L. Lasker  
 George LeCompte  
 Bernice Marx Lion  
 Lilah Ann Sewall Mulkey  
 Mary Aleeta Reed  
 Laura Reifer  
 Marvin Roberts  
 Judith Sarvetnik  
 Shirley Schumann  
 William A. Stern

### February 13/14

Fran Abts  
 L. Julian Alexander  
 Joyce Arick  
 Delia G. Bloom  
 Charles Herrman Dante  
 Charles Fleisig  
 Max Greenbaum  
 John Eric Kerner  
 Eugene P. Levy  
 Chester E. Miller  
 Milton Richard  
 Dorothy Blass Storthz  
 Hulda D. Thalheimer  
 Carla Smith Webb  
 Arthur Weiss  
 Marcia Weiss  
 Bessie Weller  
 Eleanor Wolff

### February 20 / 21

Natalie Loeb Alexander  
 Adolph Bluthenthal  
 Don-Neil Brotman  
 Annah Cohen  
 Nat M. Cohen  
 Carrie L. Dosch  
 Chai Rachel Epstein  
 Rhoda Lowenberg Gilbert  
 Robert Hestermann  
 J. B. Heyman  
 Lilian Cohen Horton  
 Ruth Horton  
 Jean Lachmann  
 Randy Maughan  
 Heloise Kaufman Pfeifer  
 Irene Bott Pfeifer  
 Vivian Brooks Rosen  
 Morris B. Sanders  
 Catherine Towbin  
 Faye Block Weinstein  
 Stella F. Weisman



### February 27/28

Alice Lasker Back  
 Sadie C. Bauduy  
 Noland Blass Sr.  
 Flora L. Cohen  
 Geraldine Defrance  
 Larry Easley  
 Harold F. Epstein  
 Hattie Jean Falk  
 Dr. Sidney Jacob Fields  
 Rachel Frank  
 Sarah Hannah Friedman  
 Max Gold  
 Isadore Goodman  
 Hattie Sickles Levy  
 Mimi Back Loeb  
 Joseph Lyons  
 Daniel Ottenheimer  
 Daniel P. Ottenheimer  
 Clara Goldenblank Raff  
 Henry Rephan  
 Louis C. Salinger  
 Dorothy Cone Sherman  
 G. Warren Stephenson Jr.  
 Levi Storthz  
 Jean Walter

We record with sorrow the  
 death of our members' relative:  
 Toby Greenberg,  
 step-mother of  
 Bruce Greenberg



## DONATIONS

**Yahrzeit Fund**

In memory of Margo Douglas

Lane Boyd

In memory of Fran & William H. "Bill" Eiseman

Mark "Billy" Stroock

In memory of Blanche & Sol Alman

Jan & Larry Alman

In memory of Sandra Blackard Levin

Fred Levin

In memory of Janet and Arnold Mayersohn

Betsy and Arnie Mayersohn, Jr.

In memory of Catherine Nachmann

Pat Highley & Arnie Nachmann

In memory of Annette J. Sanders

Keith Maddison

In memory of Renee Miller

Harvey Miller & Beth Miller

In memory of Hyman Reifer

Ken & Judy Reifer; Rachelle Sanders Reifer

In memory of Elsie Axler and Martin Greenberg

Lynn & Bruce Greenberg

In memory of Blanche & Sol Alman

Martha & Charles Alman

**Diner Memorial Fund for Jewish Education**

In honor of Debbie & Brad Diner's Birthdays

Hardy Winburn

**Storhiz Religious School Enhancement Fund**

In memory of Ann Storhiz & Phyllis Storhiz

Carol & Bob Bell

**Vogel Family Caring and Sharing Fund**

In honor of Janet and Scott Korenblat

Van Gates

In memory of Dan Schwartz

Sam Vogel

**Bauman Music Fund**

In celebration of Robert Oliva's 80<sup>th</sup> Birthday

Trudy & Jerry Jacobson

**Rabbi's Discretionary Fund**

Anonymous

Gene Pfeifer



**Jewish Federation**  
of Arkansas

**Special Group Offerings****Building A Bridge of Healing****As We Travel the Path of Grief.**

*Resumes Wednesday, March 4:*

12:00-1:30

Open. Synagogue Agudath Achim

Library; Facilitated by:

Rickie Lockwood, LCSW;

Diane Harper, LCSW.

**Are You Caring for a Loved One?****"Caregiver Support Group"**

**Monthly, Weds, 12:00-1:30; Feb 11,**

**Mar 11, April 29, May 13, June 10.**

Open.

Synagogue Agudath Achim Library;

Facilitated Sandy Lubin, BSN and by

Diane Harper, LCSW.

Interested? Come on or contact Diane at 501-408-4232 or

[diane@jewisharkansas.org](mailto:diane@jewisharkansas.org)



Our Religious School Classes 4-5 and 6-7-8 and their families had a great volunteer day at the Arkansas Food Bank

## THANK YOU TO OUR CHRONICLE ADVERTISERS

Interested in becoming a Chronicle ad sponsor? You can connect with our vibrant and diverse community through this publication that reaches over 500 people monthly and advertise for only \$25 a month. Please contact our office  
lfrauenthal@bnai-israel.us, 501-225-9700.



Leigh Graham, Owner  
11121 Rodney Parham  
Little Rock, AR 72212  
(501)224-2639  
leigh@dianes-gourmet.com  
www.dianes-gourmet.com



**iK Electric**  
power+communications  
from the ground up



Cabbage Rose  
11220 N Rodney Parham Rd.  
STE 9  
Little Rock AR 72212  
501-664-4042  
hello@crflr.com



## LIST OF NAMED FUNDS

### Supporting the Temple

Endowment Fund  
Sustaining Fund  
Salinger Landscape Fund  
Ottenheimer Fund

### Worship and Music

E. Lee Ronnel Fund for Cantorial Music  
Bauman Family Music Fund  
Mulkey Sacred Music Fund  
Memorial Prayerbook Fund

### Service to the Wider Community

Pfeifer Community Outreach Fund  
Newfeld Fund for Community Relations  
Rabbi's Discretionary Fund

### Education, Youth, Camp and Scholarships

Storthz Religious School Enhancement Fund  
Meir Chayim Camp Scholarship Fund  
Levy Fund for Camp Scholarships  
Diner Memorial Fund for Jewish Education  
Jordan Memorial Fund for Jewish Education  
Mayersohn Leadership Development Fund  
Grundfest Israel Scholarship Fund  
Rosa Pfeifer Isaacson Scholarship Fund  
Leibs Memorial Scholarship Fund  
Memorial Fund for Education and Youth

### Supporting Congregational Programs

Hallie Cohen Miller Archive Fund  
Sisterhood Legacy Endowment Fund  
Stern Library Fund  
Knoff Family Fund

### Lifecycle Support

Vogel Family Caring and Sharing Fund  
Oakland Jewish Cemetery Fund



Donate to any of our named funds by mailing a check or online. If you like, specify that you are making a donation in memory of a loved one or in honor of a specific celebration.

**Safety  
Security  
Peace of mind**

*What you provide when you  
sponsor security for Shabbat  
worship*

Congregation B'nai Israel is committed to the safety of our Temple.

Will you help us keep our sacred Temple safe for worship? Your donation is greatly needed and appreciated more than ever.

Contact Luke at [LFrauenthal@bnai-israel.us](mailto:LFrauenthal@bnai-israel.us) or 501.225.9700 to select a date.

**Sponsor Shabbat evening or morning worship for \$180.00.**

Congregation B'nai Israel Needs  
Your Help for

**Peace Across Faiths:**

**Stories of Compassion Event**

Sunday, April 26th, late afternoon.

Volunteer jobs include: Greeters (indoor/ childcare), Name tag Table, Ushers, Jewish Info Table, Art Activity Table, Food Servers, Drink Station, Food Replenishers, General Tidying, Clean up

If interested in helping, contact either

KatyBeth Coleman:

[kbc Coleman2002@gmail.com](mailto:kbc Coleman2002@gmail.com)

Karen Sherman :

[ksherman29@hotmail.com](mailto:ksherman29@hotmail.com)

**THE INTERFAITH CENTER**

